



CORROSIVE CHEMICALS

ANTICORROSION
PROCESS
EQUIPMENT



- Heat exchangers
- Reactors, columns & vessels
- Piping
- Expansion joints / bellows
- Rupture discs
- Process technologies
- Service



**MATERIALS
EXPERTISE**

01

**ANTICORROSION
EQUIPMENT**

**PROCESS
SOLUTIONS
FOR CORROSIVE
ENVIRONMENTS**

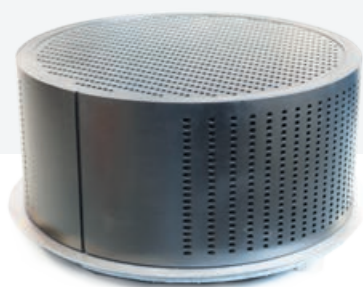
04

02

**LIFETIME SERVICE
AND MAINTENANCE**

03

**PROCESS KNOW-HOW AND
TECHNOLOGIES PROVIDER**



GRAPHILOR®

THE SUPERIOR
MECHANICAL AND
CORROSION RESISTANT
ISOSTATIC GRAPHITE

- **Graphilor® 3 XBS:** A mechanically superior phenolic impregnated graphite for most corrosive applications
- **Graphilor® 3 XTH:** A chemically ultra-resistant fluoropolymer impregnated graphite for oxidizing applications
- **Graphilor® 3 XC:** A unique ultra-resistant carbon impregnated graphite for the most extreme applications with high temperature resistance (430°C)
- Strongest and longest graphite tubes available on the market (mechanical resistance up to 34 MPa)

Mersen also proposes extruded graphite which is corrosion resistant against most mineral acids and solvents.



SILICON CARBIDE:

“UNIVERSAL
CORROSION RESISTANCE”
SPECIFICALLY SUITABLE
FOR HIGHLY AGGRESSIVE
CHEMICAL COMPOUNDS

- Extreme hardness leading to optimal resistance against abrasion
- Extreme purity which makes SiC suitable for electronic applications
- Good resistance against thermal shock



TANTALUM:

THE MOST SUITABLE
REACTIVE METAL
FOR STRONG ACIDS

- Tantalum engineered products are the preferred corrosion resistant solution, to handle highly corrosive acids up to 250° C



**ARMYLOR® PTFE
LINED PRODUCTS:**

EXPERTS IN THE PASTE
EXTRUSION PROCESS
AND LARGE DIAMETER
SEAMLESS LINERS

- Materials: Virgin PTFE and TFM (modified PTFE) with antistatic as an option
- Seamless paste extrusion liners up to DN1600
- PTFE liner thickness up to 13 mm

ANTICORROSION + EQUIPMENT

HEAT EXCHANGERS

REACTORS & COLUMNS

GRAPHITE



POLYBLOC



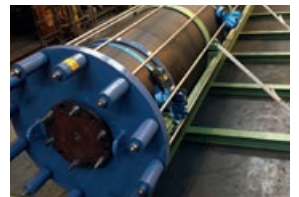
POLYTUBE



CUBIC

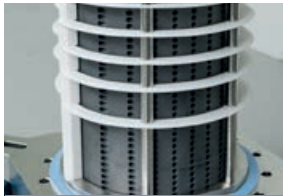


ANNULAR GROOVE

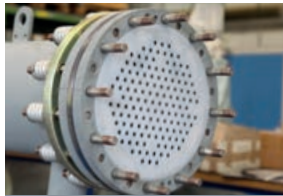


COLUMN

SILICON
CARBIDE



BLOCK



SHELL & TUBE



PLATE & FRAME

PTFE



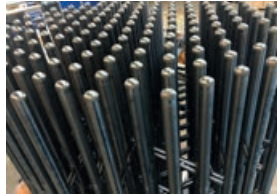
TANTALUM



SHELL & TUBE



COIL



BAYONET



COLUMN

ZIRCONIUM,
TITANIUM
AND NICKEL
ALLOYS



ZIRCONIUM



TITANIUM



NICKEL ALLOYS



PRESSURE VESSEL

PTFE PIPING, COMPENSATORS BURSTING DISCS, TANTALUM SMALL PARTS



PTFE LINED PIPING



PTFE BELLOWS



GRAPHITE BURSTING DISCS



TANTALUM SMALL PARTS



WITH OUR LARGE RANGE OF PROCESS TECHNOLOGIES, COMBINING WITH OUR CORROSION RESISTANT MATERIALS, WE CAN PROVIDE YOU AN ENGINEERED SOLUTION TO TRANSFORM YOUR CORROSIVE FEED STOCK.

- Market leader position in HCl processes (concentration, distillation, absorption, synthesis)
- From process know-how to skid-mounted turn-key delivery

PROCESS FUNCTION	H ₂ SO ₄	HCl	Cl ₂	HBr	Br ₂	P ₂ O ₅	Brine	Flue Gas	FeCl ₃
Absorption		✓		✓				✓	
Burner		✓	✓	✓	✓				
Concentration	✓	✓		✓		✓			✓
Dilution	✓	✓		✓		✓			
Gas Drying		✓	✓	✓					
Distillation/Desorption/Stripping		✓	✓	✓					
Gas cleaning / Vent treatment		✓	✓	✓	✓			✓	
Inorganic removal	✓	✓				✓	✓		✓
Organic removal	✓	✓		✓		✓	✓		✓
Production		✓		✓	✓				✓
Temp. Control	✓	✓		✓		✓		✓	
Vaporizer		✓	✓	✓	✓				
Vacuum system	✓	✓	✓	✓		✓	✓		✓

The specification or data herein contained are only given for indication, without any undertakings whatsoever. Their publication does not suggest the matter is free of any rights whatsoever. Furthermore, due to constant evolution of techniques and norms, we reserve the right to modify, at any time, the characteristics and specifications contained in this document. MERSEN refuses all and any responsibility concerning their use whatever the purpose or application. Any copy, reproduction or information herein contained, in whole or in part, made without MERSEN written consent, is forbidden according to the laws of France and particularly the law nr. 92-597 of July 1st 1992 relating to the copyright.



04

SERVICE

We follow the equipment through its entire life. Our services include preventive maintenance, on-site inspection and process diagnostics. We can send our experts to your site to audit and provide recommendations to increase the performance of our equipment.



**On-site or
remote service**

Start up

After-sales and
Maintenance

Support
improvements

Audit

Training

+ With **19** service centers located in **5** continents, we are able to provide **24/7** service to our customers.

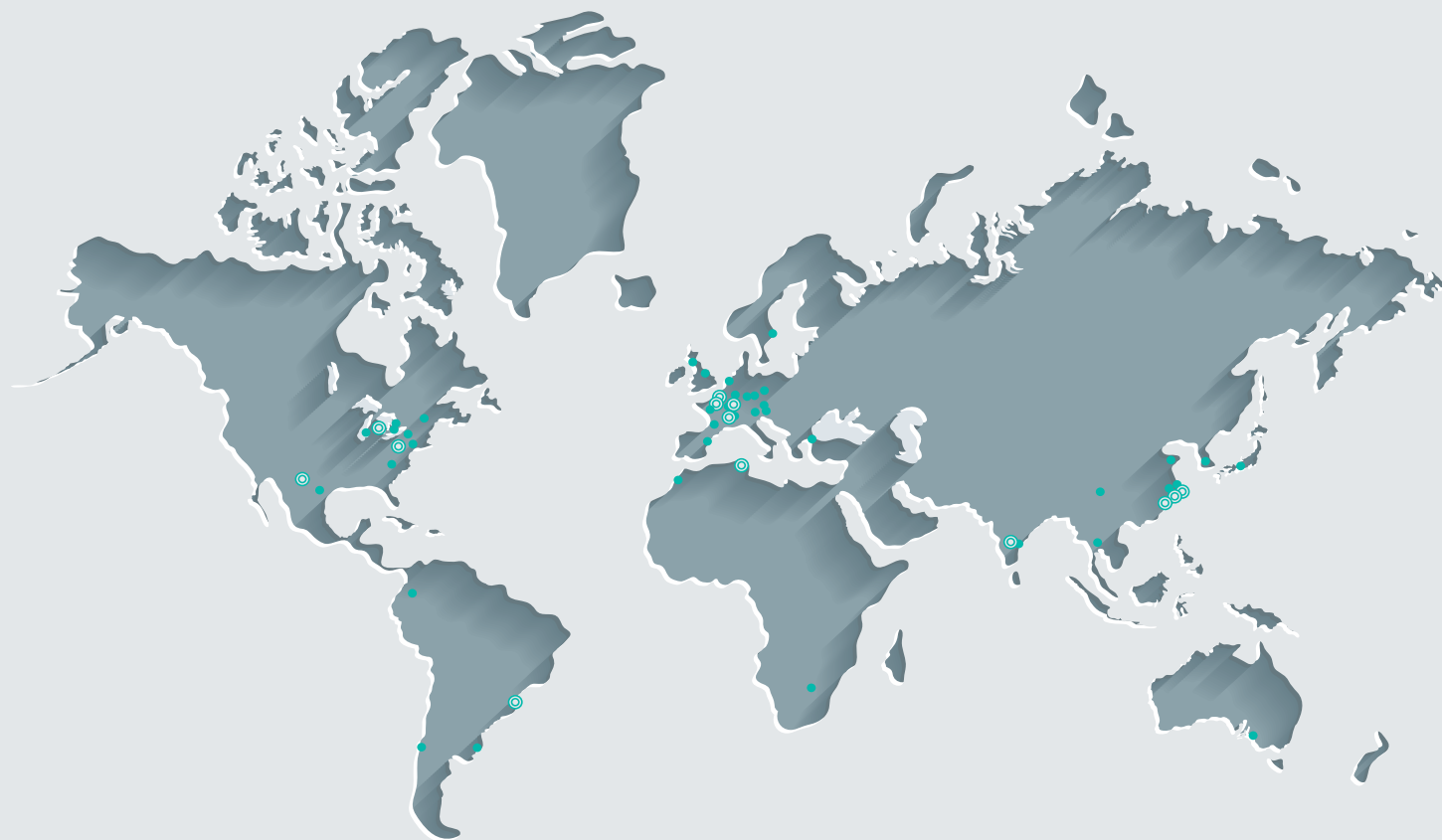


WHY MERSEN?

- MATERIALS EXPERTISE (GRAPHITE, SIC, TANTALUM, ZIRCONIUM, PTFE, PFA)
- LARGEST PORTFOLIO OF CORROSION RESISTANT ENGINEERED EQUIPMENT
- PROCESS TECHNOLOGIES KNOW-HOW
- INDUSTRIAL AND SALES PRESENCE ON ALL THE 5 CONTINENTS
- 125 YEARS EXPERIENCE

KEY APPLICATIONS

Mersen anticorrosion process equipment operates in the fine chemical, chemical, pharmaceutical and process industries, notably in the manufacturing of active pharmaceutical ingredients (API), herbicides, pesticides, flavors and fragrances, chlor-alkali, phosphoric acid, isocyanates, epichlorohydrin, electronic grade chemicals, pickling baths and many other products



GLOBAL EXPERT IN ELECTRICAL
POWER AND ADVANCED MATERIALS

EUROPE, MIDDLE EAST & AFRICA

FRANCE
info.pagny@mersen.com

GERMANY
Tantalum: info.lsg@mersen.com
Graphite/SiC/Process techno: info@gab-neumann.de

ITALIA
ace.italia@mersen.com

MIDDLE EAST & AFRICA
info.pagny@mersen.com

RUSSIA & EASTERN EUROPE
info.pagny@mersen.com

SOUTH AFRICA
SA.marketing@mersen.com

SPAIN
contact.iberica@mersen.com

THE NETHERLANDS
contact.schiedam@mersen.com

TURKEY
sales.istanbul@mersen.com

UNITED KINGDOM
ace.uk@mersen.com

ASIA

CHINA
info.xianda@mersen.com

INDIA
sales.ace.india@mersen.com

JAPAN
ace.japan@mersen.com

KOREA
sales.korea@mersen.com

SOUTH EAST ASIA
graphite.sales@framet.com

NORTH AMERICA / CANADA

USA Salem VA
sales.salem@mersen.com

USA Gonzales LA
Graphiterepairs.gonzales@mersen.com

USA Louisville KY
Sales.lgi@mersen.com

SOUTH AMERICA

ARGENTINA
infos.latam@mersen.com

BRAZIL
vendas.ace.brasil@mersen.com

CHILE
ventas.chile@mersen.com

COLOMBIA
ace.latam@mersen.com

MEXICO & LATIN AMERICA
ace.latam@mersen.com



WWW.MERSEN.COM